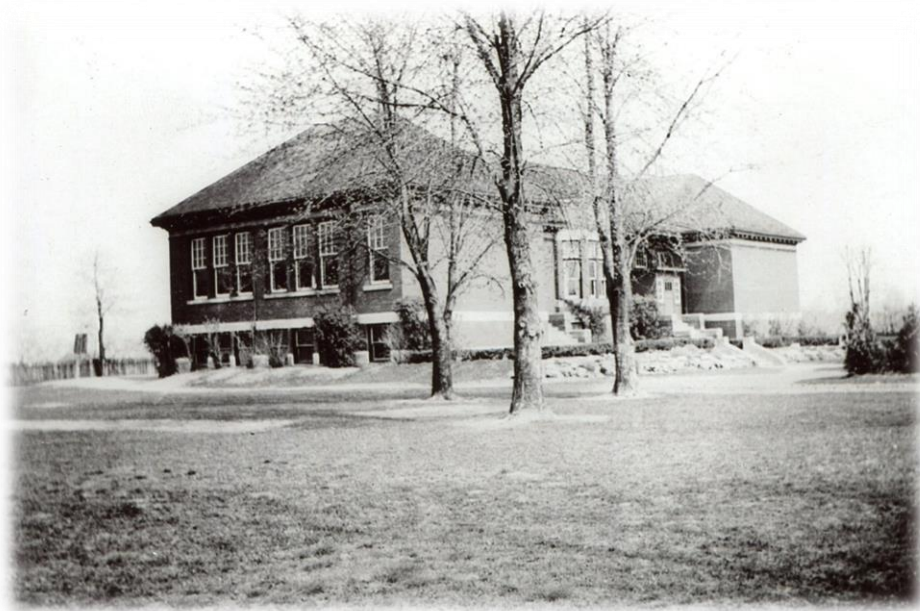


October 2017 – Mystery Photo

Strathcona School (S.S. No 15 Nelson)



“In the Winter of 1913 two acres of land were purchased from Mr. W. L. Smith on Walker’s Line. A one-roomed brick building was erected with a library and teacher’s room, a play room, lavatories and furnace room in the basement. “

The above is taken from the booklet “Historical Sketch of Strathcona School”, prepared for the Old Boys’ and Girls’ Re-Union, held 1st July 1939.

The original one roomed school formed the central part of the later enlarged school.

The first teacher, Miss Mary Bate, was engaged at a salary of \$625 and took charge of the new school on 1st September 1914. There were 29 pupils registered on the first day and by the end of the year there were 46. By the end of 1922 there were 63 pupils in nine grades. In 1922, 2 additional rooms were added and a second teacher was hired.

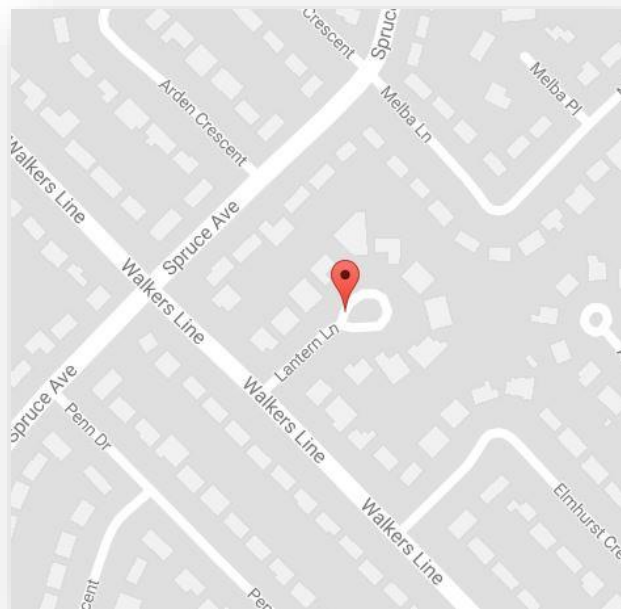
Miss Edith Donkin, of Burlington, joined the staff in June of 1924. Miss Donkin stayed on at the school for 40 years, retiring as Principal in 1964. When she retired the school had grown to 13 rooms with 400 pupils.

Miss Donkin from the booklet "50th Anniversary Strathcona School 1914-1964 A Tribute to Miss Edith Donkin"



The school was eventually demolished.

Strathcona School was located on Walker's Line at Lantern Lane.



BHS Members Anne Wingfield and Mike McDonnell identified the photo and thank you to Anne for locating it at Lantern Lane.

See a class photo on the next page.

Grade 2 Class 1951 (donated by Audrey Verhey)



Front row: 8 unidentified boys. Second row: 3 unidentified girls, Jackie?, unidentified girl, Verna Williams, Audrey Verhey, 3 unidentified girls. The teacher, Mrs Rosell, is standing at the left. The others have not been identified.

If you can identify any of the others please email info@burlingtonhistorical.ca .